

Accessories: special elbows

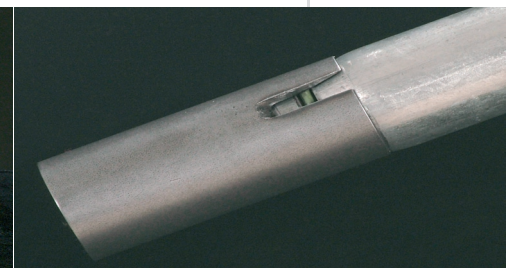
Tube Fit+ is a revolutionary system exclusively acquired by COOPRA Buis B.V. in order to connect greenhouse tubes waterproof without welding operations or others. The tubes are especially designed for heating installations of greenhouses. The tubes can be fixed by hand and are absolutely watertight.

Tube Fit+ can be supplied on location in several conditions u.o.:

- Provided with a white powdercoating for an excellent corrosionresistance, and with an optimum lightreflection;
- Provided with thermic or electrolycal zincing.



Connectors



Profile Tube Fit+

The advantages:

- Full scale system including special fittings and components.
- Assembly can be executed during pending crops.
- Assembly by hand and absolutely watertight.
- No weld and no operations afterwards such as polishing and painting.
- Blowrobot and cropwagon are able to move with a constant speed.
- The system is collapsable and suitable for re-use.
- Environmental friendly and in accordance with applicable ARBO (labour) rules.

Dimensions: Ø 33,7 / 38,0 / 44,5 / 51,0 / 57,0 / 60,3 en 63,5 mm (supplies through your installer)



COOPRA Buis B.V.

Wolweverstraat 31
2984 CE Ridderkerk
T +31 180 480 505
F +31 180 480 868
E info@cooprabuis.nl
W www.cooprabuis.nl